

bbs-tek® Fixed Output and smart Self-Adjust alarms.

- Applies to model numbers prefixed with 'BBS'.
- Fit alarm so the sound projects into hazard area, without obstruction.
- Backup alarms must be loud enough for all locations where the truck may backup.
- DO NOT fit facing up.
- Please note; bbs-tek® alarms make a 'shh-shh-shh' sound.

For smart Self-Adjusting alarms:

- Applies to model numbers prefixed with 'SA-BBS'
- Fit as close to truck rear as possible to ensure alarm reacts to appropriate ambient noise levels.
- Do not fit close to a noise source (engine or exhaust for example) as this may prevent the alarm from functioning correctly.
- Do not fit in a confined area or cover in any way.

Front End Loaders: Installation location options:



NOTE: The wires can be run in behind the light cluster and connected to the backup light circuit.

Model options for garbage trucks:

- SA-BBS-97 will automatically adjust to suit most anticipated backing locations and will automatically adjust between 77 dBA and 97 dBA depending on the background noise level.
- **Other options:**
- SA-BBS-107 if the truck is likely to backup in very noisy areas or
- BBS-92 or BBS-97 if appropriate.

After installation check alarm is loud enough throughout hazard area to rear of machine. (Note; if installing a fixed output BBS model the alarm needs to be loud enough for all expected backing locations.)



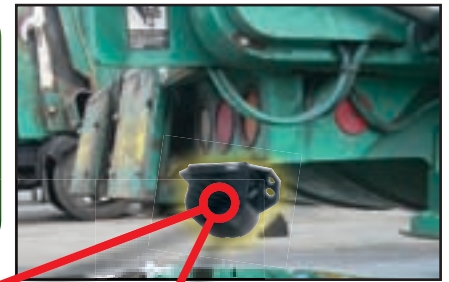
For further assistance or to recommend an update to this instruction, please email: info@brigade-inc.com



Rear End Loaders: Installation location options:



OPTION: For BBS models only, position **NOT** suitable for Self Adjusting SA-BBS models



SA-BBS or BBS alarms may be installed up-side down (for example: under lights as shown here).



- Do not obstruct lights.
- If smart self-adjusting alarm:
 - must be very close to rear most point,
 - may be installed up-side down.
- If under body may need extra protection if delivering to landfill sites.
- Optional location for fixed output high and away from rear most body part.

After installation check alarm is loud enough throughout hazard area to rear of machine. (Note; if installing a fixed output BBS model the alarm needs to be loud enough for all expected backing locations.)

Yellow Iron: Installation location options:

Model options:

SA-BBS-107

BBS-107

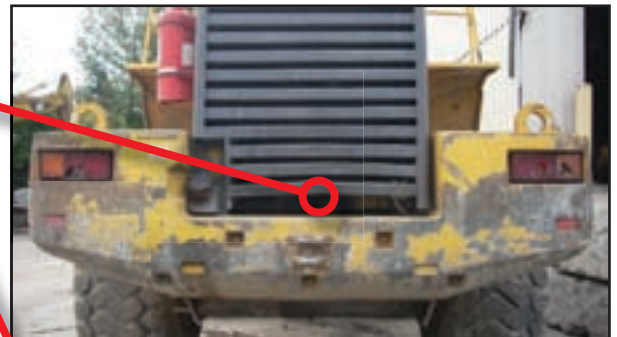
BBS-102

SA-BBS-97 (may be suitable for smaller material handlers or newer quieter machines working in quieter areas.)

If installed behind a grill:

- the benefit of auto self-adjust may be lost,
 - some of the alarm loudness will be muffled.
- Remember; the alarm sound must be projected directly in to the hazard area.

After installation check alarm is loud enough throughout hazard area to rear of machine. (Note; if installing a fixed output BBS model the alarm needs to be loud enough for all expected backing locations.)



For further assistance or to recommend an update to this instruction, please email: info@brigade-inc.com



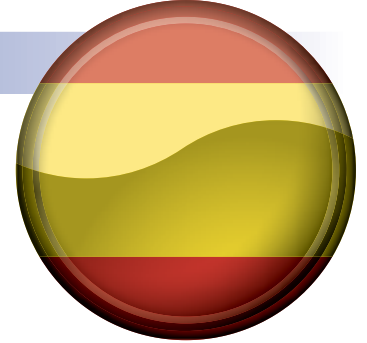
Espania

bbs-tek® alarmas de salida fija y ajuste automático.

- Instale la alarma de tal manera que el sonido se propague en la zona de peligro sin ningún impedimento.
- NO la instale boca arriba.
- Por favor tenga en cuenta : las alarmas bbs-tek® producen un sonido parecido a un “sh-sh-sh”.

Para Alarmas Autoajustables

- No instale la alarma cerca de una fuente de ruido (motor o tubo de escape, por ejemplo) ya que esto puede hacer que la alarma no funcione correctamente.
- Instale la alarma de tal forma que el micrófono (en el lado izquierdo en el modelo SA-BBS-97, detrás de la rejilla en el modelo SA-BBS-107) no esté orientado hacia una fuente de ruido.
- No instale la alarma en un espacio reducido ni la cubra de ninguna forma.



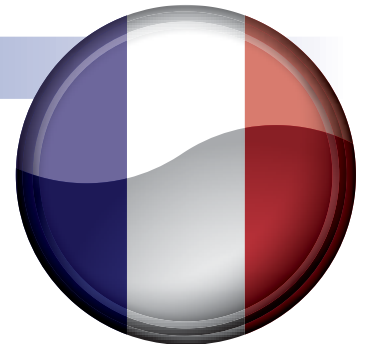
Francais

bbs-tek® Alarmes Auto Ajustable Et Fixe (changement du niveau sonore par une sortie externe)

- Installer l'alarme en direction de la zone à sécuriser. Le signal sonore doit être en champ libre.
- Ne pas installer face vers le haut
- Veuillez noter que les alarmes bbs-tek® font un son de type « shh shh shh »

Pour Les Alarmes Auto Ajustables

- Ne pas installer près d'une source sonore (moteur, pot d'échappement par exemple) car cela pourrait entraîner des dysfonctionnements
- Installer l'alarme de telle manière que le microphone interne à l'alarme (situé sur le côté gauche ou derrière la grille) ne soit pas à proximité d'une source sonore.
- Ne pas installer dans un endroit confiné et ne jamais recouvrir.



Brigade Electronics Inc

Suite1, 202 Delaware Avenue, Palmerton, PA 18071 USA

Telephone (610) 826-7870

Facsimile (484) 229-0088

info@brigade-inc.com

www.brigade-electronics.com

For further assistance or to recommend an update to this instruction, please email: info@brigade-inc.com

